

FAST FACTS

- In 2019, 1,809 Ohioans died by suicide. This is a slight decrease from 1,836 suicides in 2018.
- From 2018 to 2019, the rate of suicide decreased among Black and white non-Hispanic females and increased among Black non-Hispanic males.
- In 2019, adults 25-44 years of age had the highest rate of suicide, followed by adults 45-64 years of age.
- Among males, those 75 years and older had the highest rate of suicide.
- Among females, those 45-54 years old had the highest rate of suicide.
- Suicide by drug overdose was seven times more common among females compared with males.

RESOURCES

NATIONAL SUICIDE PREVENTION LIFELINE
 1-800-273-TALK (8255)
suicidepreventionlifeline.org

- Crisis Text Line
Text "4HOPE" to 741741

Suicide in Ohio

- In 2019, suicide was the 2nd leading cause of death among Ohioans 10-34 years of age and the 11th leading cause of death in Ohio overall.
- While there was a 27.4% increase in the number of suicide deaths from 2010 to 2019, from 2018 to 2019, the number of suicide deaths decreased 1.5% and the suicide rate decreased 0.7%.

Figure 1. Number and Age-Adjusted Rate of Suicide by Year, Ohio, 2010-2019

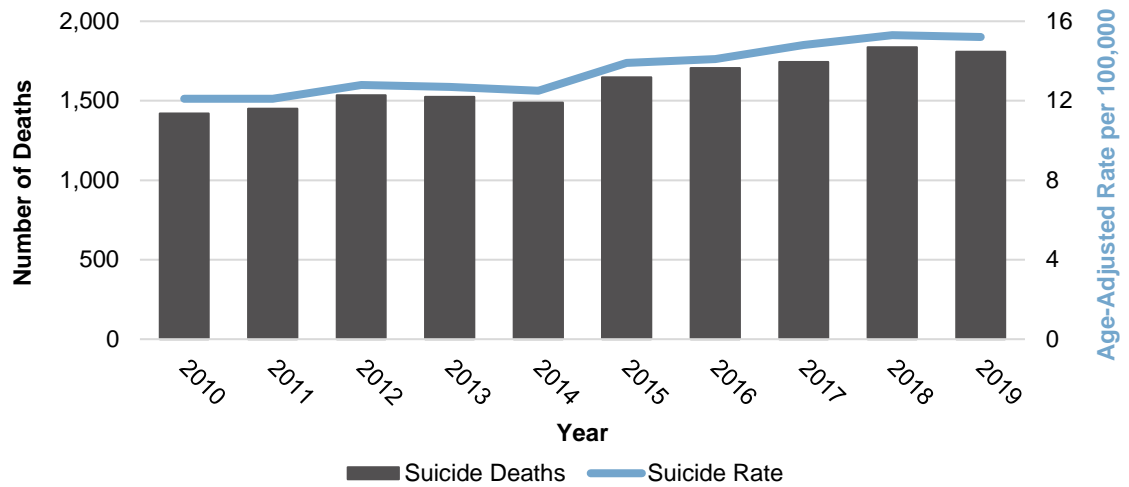
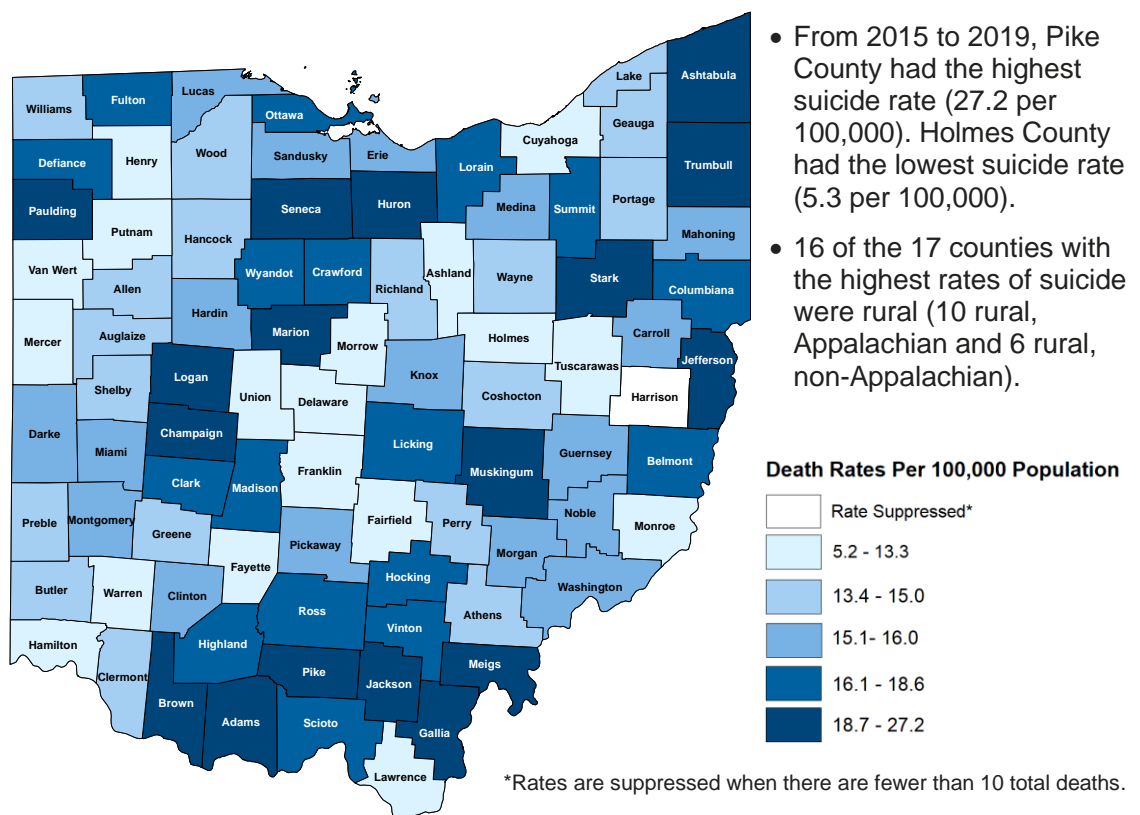


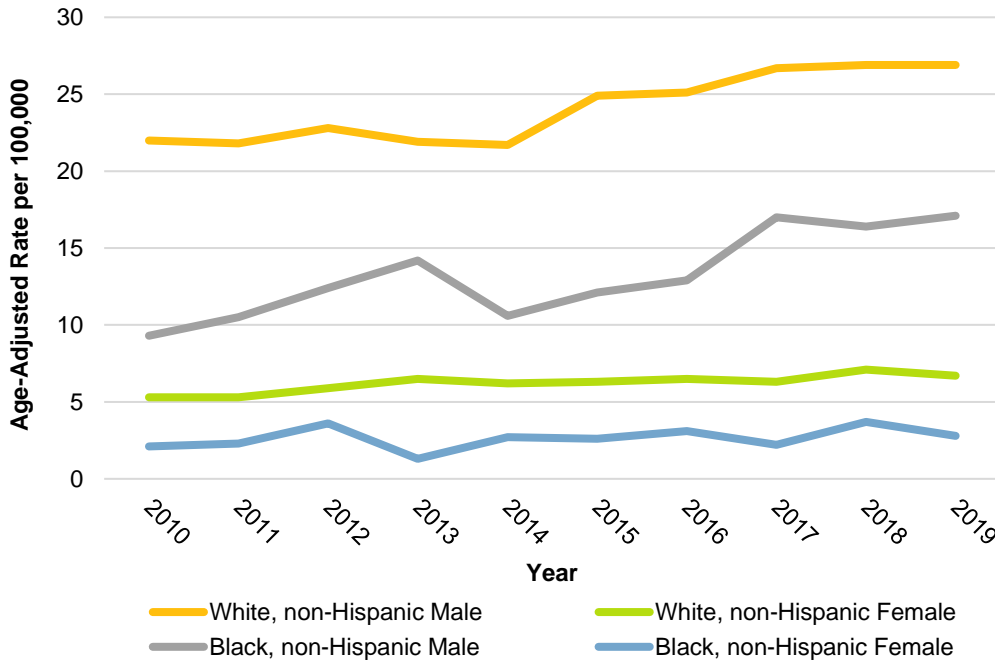
Figure 2. Age-Adjusted Rate of Suicide by County of Residence, Ohio, 2015-2019



- From 2015 to 2019, Pike County had the highest suicide rate (27.2 per 100,000). Holmes County had the lowest suicide rate (5.3 per 100,000).
- 16 of the 17 counties with the highest rates of suicide were rural (10 rural, Appalachian and 6 rural, non-Appalachian).

Trends by Demographic

Figure 3. Age-Adjusted Rate of Suicide by Race/Ethnicity and Sex, Ohio, 2010-2019



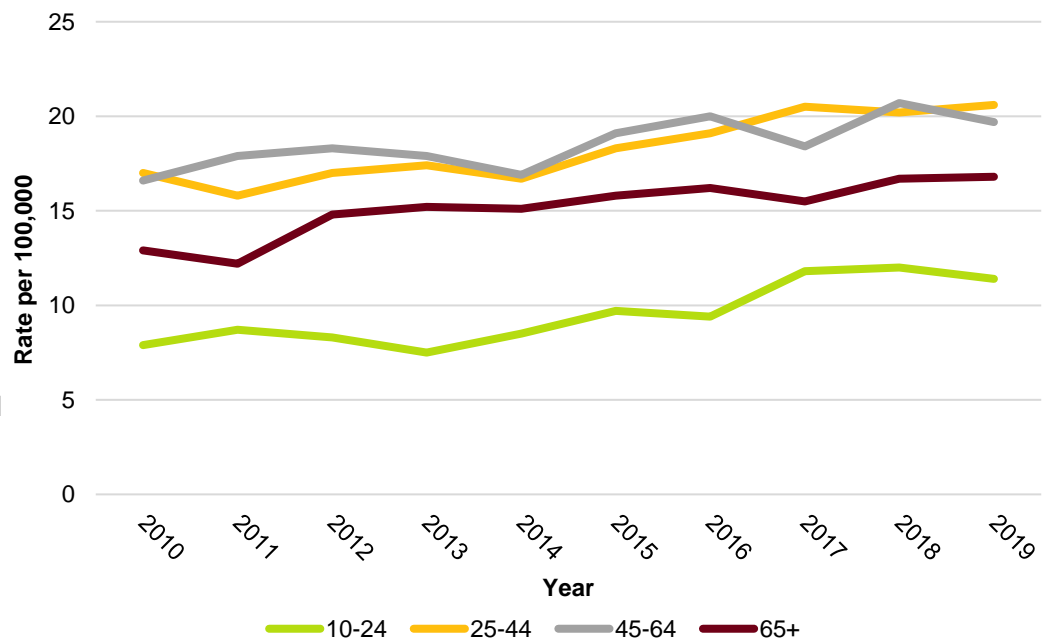
- From 2010 to 2019, white non-Hispanic males had the highest rates of suicide.
- From 2018 to 2019, the rate of suicide:
 - Did not change for white non-Hispanic males (26.9 per 100,000).
 - Increased 4.3% for Black non-Hispanic males (16.4 to 17.1 per 100,000).
 - Decreased 5.6% for white non-Hispanic females (7.1 to 6.7 per 100,000).
 - Decreased 24.3% for Black non-Hispanic females (3.7 to 2.8 per 100,000).

*Race/ethnicity categories are mutually exclusive. Specified race (white, Black, other) excludes Hispanic ethnicity. Other race/ethnicity groups not shown due to small numbers.

**In Ohio, five people die by suicide every day.
One youth (10-24 years) dies by suicide every 34 hours.**

Figure 4. Suicide Rate by Age Group, Ohio, 2010-2019

- In 2019, adults 25-44 years of age had the highest rate of suicide, followed by adults 45-64 years. This was a shift from 2018, when adults 45-64 years had the highest rate of suicide.
- From 2018 to 2019, the rate of:
 - Youth suicide (10-24 years) decreased 5.0% (12.0 to 11.4 per 100,000).
 - Adult suicide among 25-44 year olds increased 2.0% (20.2 to 20.6 per 100,000) and among 45-64 year olds decreased 4.8% (20.7 to 19.7 per 100,000).
 - Older adult suicide (65+ years) increased 0.6% (16.7 to 16.8 per 100,000).



Age and Sex

- In 2019, females made up 19.5% (352) of suicide deaths, while males made up 80.5% (1,457).
- Among males, those aged 35-44 years had the highest number of suicide deaths (249) and second highest rate (35.9 per 100,000). Those aged 75 years and older had the highest rate of suicide deaths (42.0 per 100,000).
- Among females, those aged 45-54 years had the highest number and rate of suicide deaths.

Figure 5. Number of Suicides by Age and Sex, Ohio, 2019

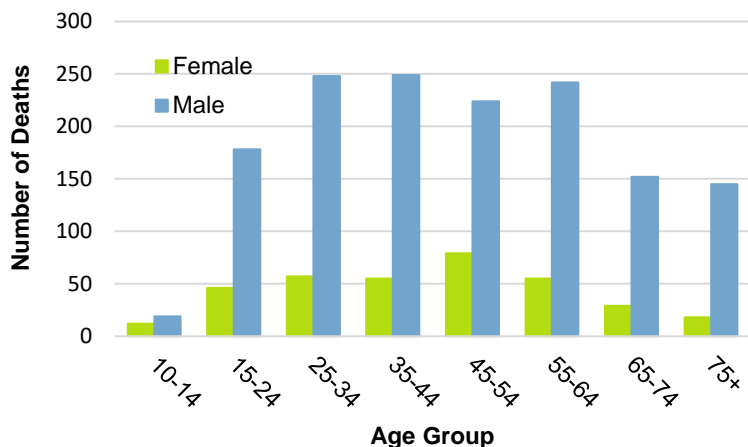
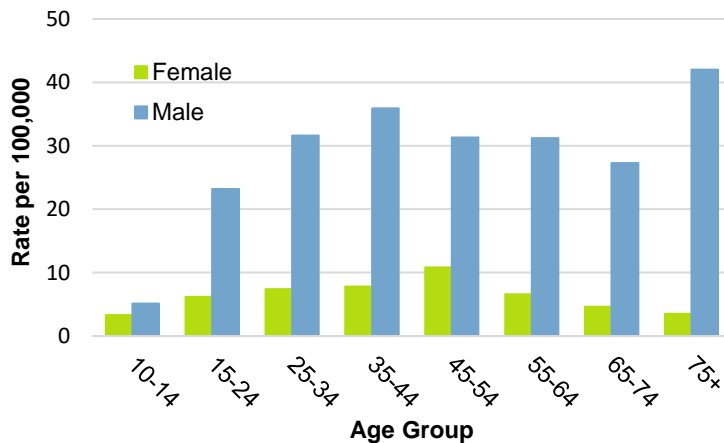


Figure 6. Suicide Rate by Age and Sex, Ohio, 2019

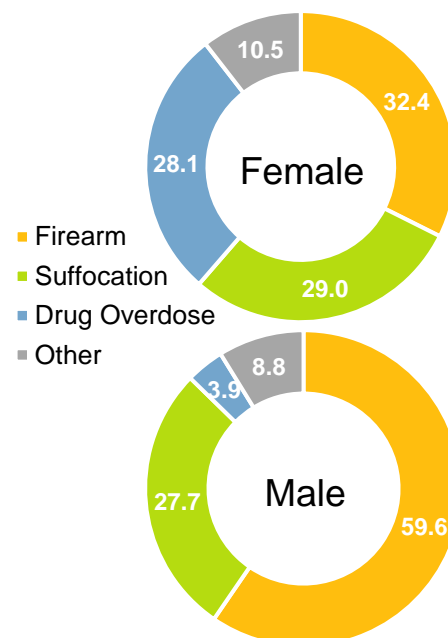
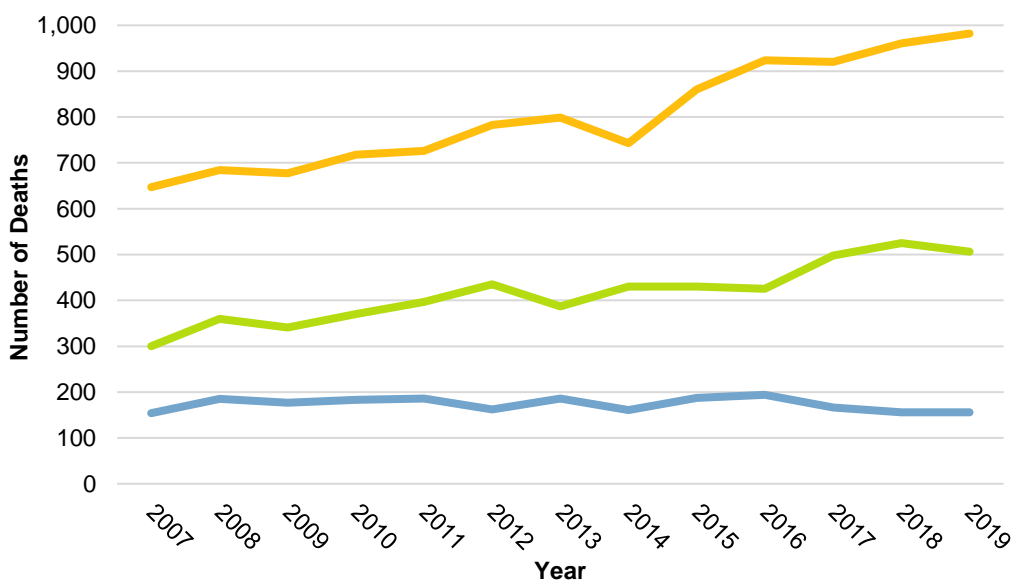


Mechanism

- From 2018 to 2019, the number of suicides by suffocation (e.g., hanging) decreased 3.6% (from 525 to 506), suicides by firearm increased 2.2% (from 961 to 982), and suicides by drug poisoning remained the same at 156.
- In 2019, firearms were the leading mechanism of suicide among both females and males, accounting for 32.4% of female suicides and 59.6% of male suicides.
- Suicide by drug overdose accounted for 28.1% of female suicides, compared with 3.9% of male suicides.

Figure 8. Percentage of Suicides by Mechanism and Sex, Ohio, 2019

Figure 7. Number of Suicides by Mechanism, Ohio, 2010-2019



Source: Ohio Department of Health (ODH) Bureau of Vital Statistics; analysis conducted by ODH Violence and Injury Prevention Section. Analysis includes Ohio residents with any of the following ICD-10 codes as the underlying cause of death: X60-X84, Y87.0, U03. Rates calculated per 100,000 population. Age-adjusted rates are based on the 2000 U.S. standard population.

2010-2019 Demographic Summary

Table 1. Number of Suicides by Year and Demographic Characteristic, Ohio, 2010-2019

Demographics	2010	2011	2012	2013	2014	2015	2016	2017	2018	2019	
	Number	Number	Number	Number	Number	Number	Number	Number	Number	Number	Rate*
Age											
5-9	0	0	0	1	0	0	0	2	0	1	--
10-14	6	9	18	14	25	14	17	25	28	31	4.2
15-24	180	197	177	161	172	210	198	244	243	224	14.9
25-34	246	228	233	244	221	258	302	296	295	305	19.6
35-44	245	225	254	256	258	269	251	301	297	304	21.7
45-54	317	334	324	316	295	335	305	308	298	303	20.9
55-64	216	243	263	253	242	271	327	268	342	297	18.5
65-74	108	101	122	137	148	146	160	146	174	181	15.2
75+	102	100	131	129	124	145	146	154	159	163	19.0
Sex											
Female	291	291	318	336	325	339	365	328	387	352	6.0
Male	1,129	1,146	1,204	1,175	1,160	1,309	1,341	1,416	1,449	1,457	25.0
Race/Ethnicity											
White, non-Hispanic	1,309	1,320	1,381	1,364	1,338	1,494	1,533	1,546	1,632	1,588	16.5
Black, non-Hispanic	79	87	109	107	95	103	118	138	150	148	9.5
Other, non-Hispanic	11	15	10	17	27	20	29	27	18	25	7.2
Hispanic	21	13	19	18	22	22	23	27	31	40	9.4
Race/Ethnicity and Sex											
White, non-Hispanic Female	265	269	287	321	292	305	329	297	346	317	6.7
White, non-Hispanic Male	1,044	1,051	1,094	1,043	1,046	1,189	1,204	1,249	1,286	1,271	26.9
Black, non-Hispanic Female	16	17	26	11	21	20	24	17	31	23	2.8
Black, non-Hispanic Male	63	70	83	96	74	83	94	121	119	125	17.1
Hispanic Female	5	2	4	3	3	8	2	5	6	7	--
Hispanic Male	16	11	15	15	19	14	21	22	25	33	15.5
Total	1,420	1,451	1,534	1,524	1,488	1,648	1,706	1,744	1,836	1,809	15.2

Source: Ohio Department of Health (ODH) Bureau of Vital Statistics; analysis conducted by ODH Violence and Injury Prevention Section. Analysis includes Ohio residents with any of the following ICD-10 codes as the underlying cause of death: X60-X84, Y87.0, U03. Due to missing demographic information, demographic categories may not sum to total. Race/ethnicity categories are mutually exclusive. Hispanic includes any race. Specified race (white, Black, other) excludes Hispanic ethnicity. Other race includes American Indian, Asian/Pacific Islander and Other.

*Rates presented for age groups are age-specific. Rates presented for sex and race/ethnicity are age-adjusted to the 2000 U.S. standard population. Rates calculated per 100,000 population and suppressed when counts <10.

Table 2. Number and Age-Adjusted Rate of Suicide by County, Ohio, 2015-2019

County	2015	2016	2017	2018	2019		2015-2019	
	Number	Number	Number	Number	Number	Rate*	Number	Rate*
Adams	4	4	5	9	8	--	30	21.4
Allen	18	15	13	12	10	10.8	68	13.5
Ashland	3	6	8	8	3	--	28	10.8
Ashtabula	19	19	27	22	16	13.8	103	20.6
Athens	8	10	6	7	11	15.0	42	14.0
Auglaize	4	6	11	3	4	--	28	13.6
Belmont	9	10	13	17	10	14.2	59	16.2
Brown	6	11	8	10	7	--	42	19.6
Butler	47	48	52	50	53	14.8	250	13.6
Carroll	3	6	6	3	4	--	22	16.0
Champaign	10	7	7	6	10	24.3	40	21.0
Clark	22	20	25	29	26	19.6	122	17.9
Clermont	18	30	29	34	43	19.8	154	14.6
Clinton	5	4	6	8	8	--	31	15.2
Columbiana	20	16	17	18	21	19.0	92	17.6
Coshocton	1	6	2	7	10	24.7	26	13.6
Crawford	7	9	5	5	15	28.8	41	17.1
Cuyahoga	153	165	157	188	186	14.7	849	13.1
Darke	13	10	4	10	5	--	42	15.4
Defiance	6	6	9	5	5	--	31	17.0
Delaware	16	24	21	19	27	13.3	107	10.5
Erie	5	18	12	9	14	20.3	58	15.1
Fairfield	14	18	20	21	22	13.8	95	12.3
Fayette	4	4	2	2	2	--	14	10.2
Franklin	158	141	165	177	153	11.4	794	12.0
Fulton	6	6	5	15	5	--	37	18.6
Gallia	5	5	8	10	10	37.6	38	25.1
Geauga	12	14	13	19	12	11.6	70	13.4
Greene	31	20	22	27	19	10.2	119	13.6
Guernsey	10	3	6	7	6	--	32	15.8
Hamilton	95	107	112	105	110	13.6	529	12.9
Hancock	9	4	11	13	14	16.0	51	13.4
Hardin	3	5	5	2	9	--	24	15.7
Harrison	1	5	2	0	1	--	9	--
Henry	5	3	2	3	4	--	17	13.1
Highland	5	11	5	6	7	--	34	16.6
Hocking	4	5	6	6	5	--	26	16.6

Table 2. Number and Age-Adjusted Rate of Suicide by County, Ohio, 2015-2019

County	2015	2016	2017	2018	2019		2015-2019	
	Number	Number	Number	Number	Number	Rate*	Number	Rate*
Holmes	3	3	2	2	1	--	11	5.3
Huron	8	9	9	11	14	21.6	51	18.7
Jackson	6	4	11	8	12	39.3	41	25.3
Jefferson	9	13	10	15	16	22.2	63	18.7
Knox	8	12	9	10	10	14.7	49	15.2
Lake	31	32	37	34	43	16.7	177	14.0
Lawrence	15	9	6	12	3	--	45	13.1
Licking	33	29	32	25	31	18.0	150	16.9
Logan	10	5	9	12	9	--	45	20.1
Lorain	47	46	61	52	51	16.3	257	16.3
Lucas	56	62	71	64	73	17.1	326	15.2
Madison	10	5	10	6	7	--	38	16.1
Mahoning	36	39	36	38	37	14.8	186	15.4
Marion	14	14	10	10	18	26.8	66	20.2
Medina	28	31	28	25	31	16.2	143	15.7
Meigs	6	7	6	9	4	--	32	26.6
Mercer	5	6	4	5	1	--	21	10.5
Miami	19	13	14	21	12	11.6	79	15.1
Monroe	1	3	1	2	4	--	11	12.4
Montgomery	80	88	78	79	91	16.7	416	15.5
Morgan	2	3	1	4	3	--	13	15.1
Morrow	6	4	1	6	2	--	19	11.4
Muskingum	16	18	14	25	17	18.5	90	20.8
Noble	2	3	1	3	1	--	10	15.6
Ottawa	4	4	8	11	11	29.2	38	18.5
Paulding	2	4	7	4	4	--	21	23.2
Perry	4	5	6	4	4	--	23	13.9
Pickaway	8	9	14	7	10	16.6	48	15.7
Pike	9	5	9	9	5	--	37	27.2
Portage	21	29	16	31	23	14.0	120	13.9
Preble	4	8	3	8	7	--	30	14.4
Putnam	4	5	5	2	3	--	19	11.9
Richland	28	17	16	21	11	8.5	93	14.8
Ross	12	15	15	18	10	12.9	70	17.5
Sandusky	8	7	11	9	8	--	43	15.4
Scioto	9	11	10	21	13	17.8	64	17.2
Seneca	11	10	10	12	14	25.8	57	20.2

Table 2. Number and Age-Adjusted Rate of Suicide by County, Ohio, 2015-2019

County	2015	2016	2017	2018	2019		2015-2019	
	Number	Number	Number	Number	Number	Rate*	Number	Number
Shelby	9	1	6	11	7	--	34	14.0
Stark	66	81	70	71	73	19.8	361	19.0
Summit	108	94	96	80	90	16.8	468	16.7
Trumbull	38	41	46	35	36	16.8	196	19.4
Tuscarawas	15	10	15	13	11	10.0	64	12.6
Union	6	5	3	9	7	--	30	10.4
Van Wert	8	1	5	2	3	--	19	13.3
Vinton	1	1	3	3	4	--	12	16.7
Warren	21	31	29	26	31	12.6	138	11.9
Washington	7	9	13	6	11	16.8	46	15.8
Wayne	12	11	16	17	24	21.1	80	14.2
Williams	2	6	7	6	8	--	29	15.0
Wood	17	24	14	23	11	9.0	89	14.1
Wyandot	4	3	3	6	4	--	20	17.6
Ohio	1,648	1,706	1,744	1,836	1,809	15.2	8,743	14.7

Source: Ohio Department of Health (ODH) Bureau of Vital Statistics; analysis conducted by ODH Violence and Injury Prevention Section. Analysis includes Ohio residents with any of the following ICD-10 codes as the underlying cause of death: X60-X84, Y87.0, U03. County data are based on county of residence.

*Rates are age-adjusted to the 2000 U.S. standard population. Rates are calculated per 100,000 population and suppressed when counts <10.