

FAST FACTS

- In 2021, 1,766 Ohioans died by suicide, which was an 8% increase over 2020, compared with a national increase of 4.8%.¹
- From 2020 to 2021, white non-Hispanic males and females had the largest increases in the rate of suicide (7%).
- In 2021, adults 25-44 years of age had the highest rate of suicide, which increased 13% from 2020, compared with 5% increases among other reported age groups.
- Among males in 2021, those 75 years and older had the highest rate of suicide.
- Among females in 2021, those 45-54-years-old had the highest number and rate of suicide.
- In 2021, firearms accounted for over half of all suicide deaths.

1. Source: National Center for Health Statistics, Provisional Multiple Cause of Death Data on CDC WONDER <https://wonder.cdc.gov/mcd.html> (Accessed Jan. 30, 2023)

RESOURCES



- Crisis Text Line
Text "4HOPE" to 741741

Suicide in Ohio

- In 2021, suicide was the second-leading cause of death among Ohioans 10-34 years of age and the twelfth-leading cause of death in Ohio overall.
- From 2020 to 2021, the number of suicide deaths increased 8%, to 1,766 deaths, and the rate of suicide death increased 7%, to 14.8 deaths per 100,000 population.

Figure 1. Number and Age-Adjusted Rate of Suicide Deaths by Year, Ohio, 2012-2021

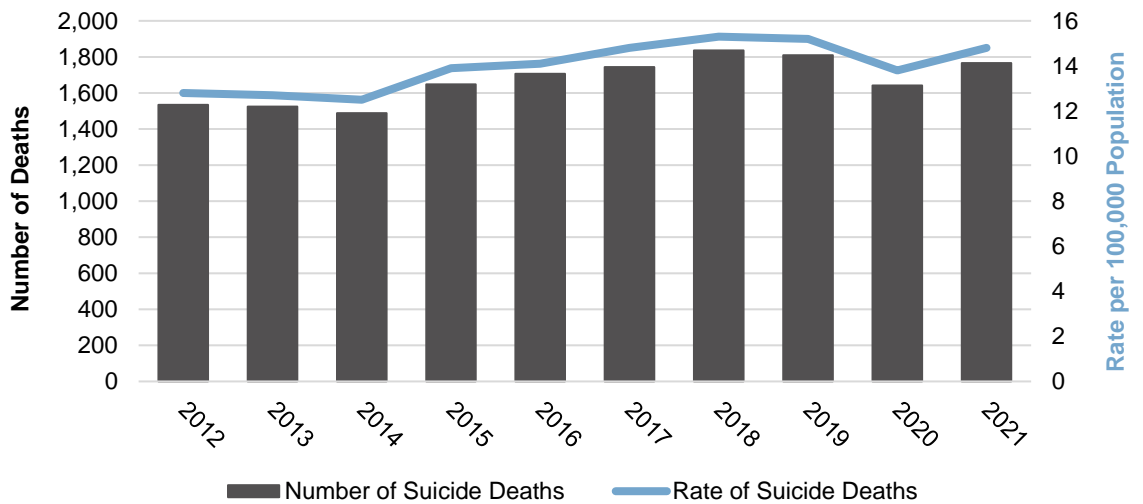
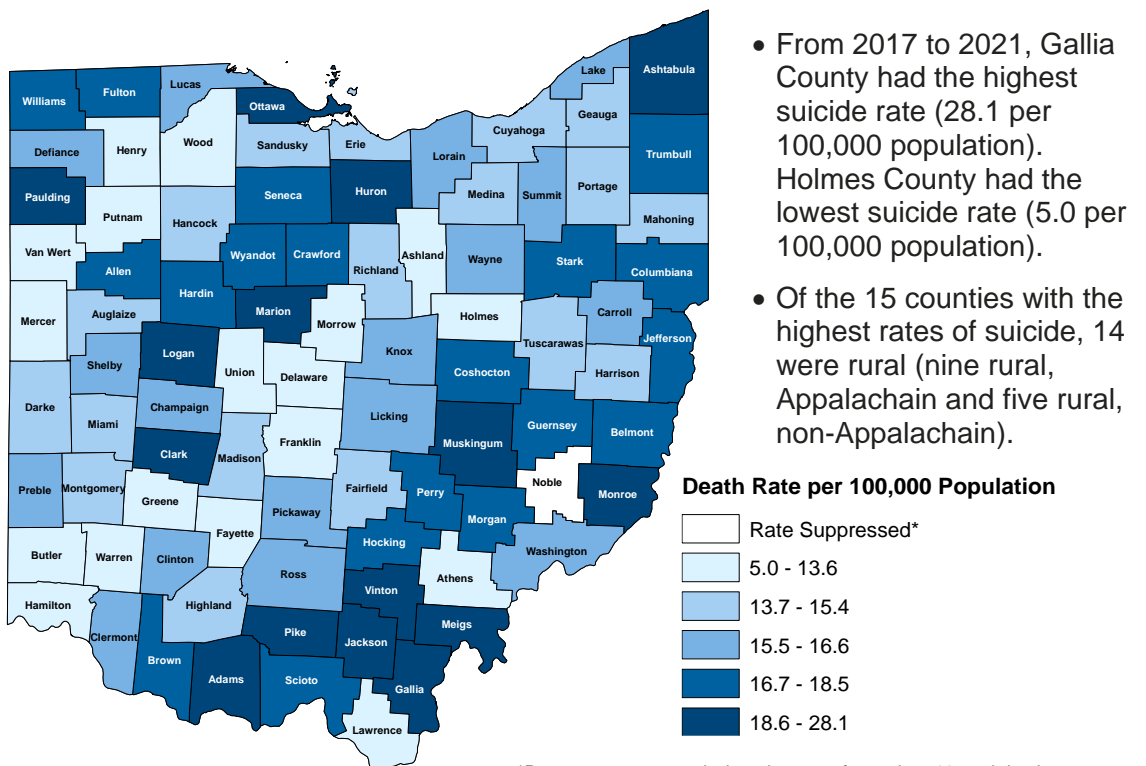


Figure 2. Average Age-Adjusted Rate of Suicide Deaths by County of Residence, Ohio, 2017-2021

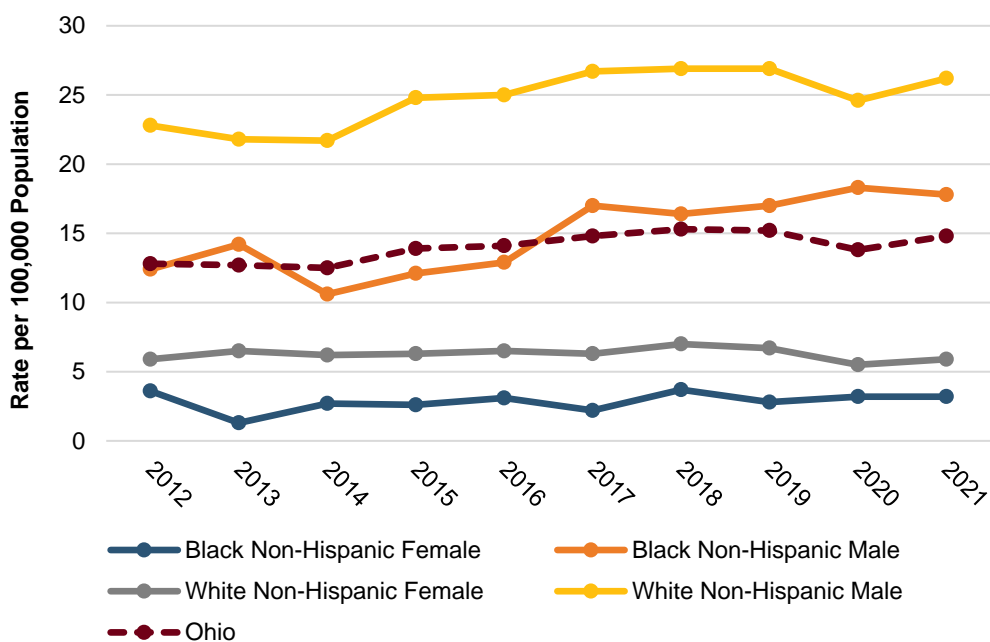


- From 2017 to 2021, Gallia County had the highest suicide rate (28.1 per 100,000 population). Holmes County had the lowest suicide rate (5.0 per 100,000 population).
- Of the 15 counties with the highest rates of suicide, 14 were rural (nine rural, Appalachian and five rural, non-Appalachian).

*Rates are suppressed when there are fewer than 10 total deaths.

Trends by Demographic

Figure 3. Age-Adjusted Rate of Suicide Deaths by Race/Ethnicity and Sex, Ohio, 2012-2021



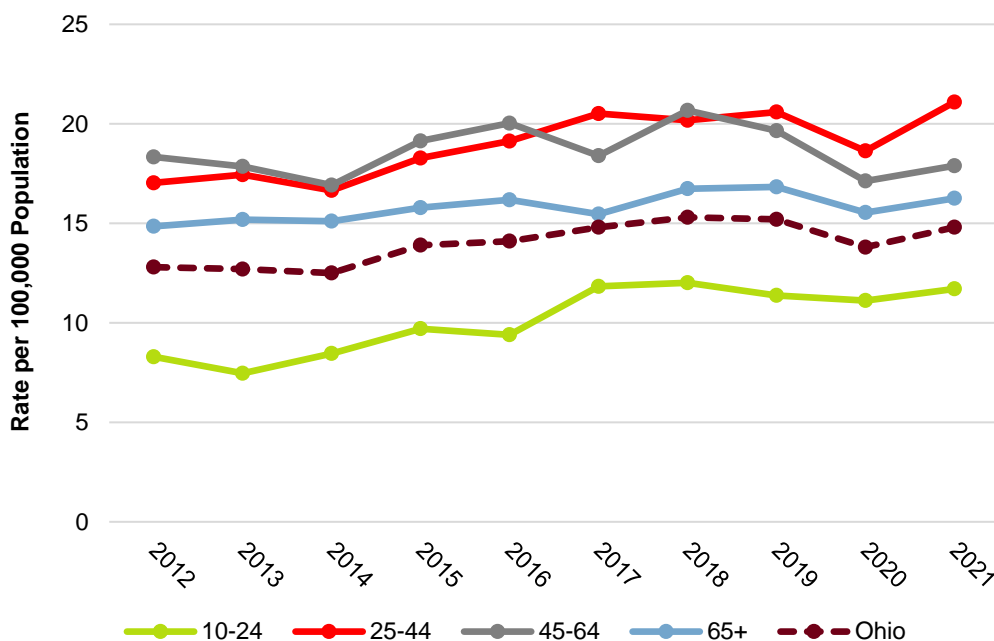
- From 2012 to 2021, white non-Hispanic males had the highest rates of suicide death.
- From 2020 to 2021, the rate of suicide:
 - Increased 7% among white non-Hispanic males (24.6 to 26.2 per 100,000 population).
 - Decreased 3% among Black non-Hispanic males (18.3 to 17.8 per 100,000 population).
 - Increased 7% among white non-Hispanic females (5.5 to 5.9 per 100,000 population).
 - Did not change among Black non-Hispanic females (3.2 per 100,000 population).

*Race/ethnicity categories are mutually exclusive. Specified race (white, Black) excludes Hispanic ethnicity. Other race/ethnicity groups not shown due to small numbers.

**Five Ohioans die by suicide every day.
One youth (10-24 years) dies by suicide every 34 hours.**

- In 2021, adults 25-44 years of age had the highest rate of suicide death, followed by adults 45-64 years of age.
- From 2020 to 2021, the rate of:
 - Youth suicide (10-24 years) increased 5% (11.1 to 11.7 per 100,000 population).
 - Adult suicide among 25-44-year-olds increased 13% (18.6 to 21.1 per 100,000 population) and among 45-64-year-olds increased 5% (17.1 to 17.9 per 100,000 population).
 - Older adult suicide (65+ years) increased 5% (15.5 to 16.3 per 100,000 population).

Figure 4. Rate of Suicide Deaths by Age Group and Year, Ohio, 2012-2021



Age and Sex

- In 2021, females accounted for 19% of suicide deaths, while males accounted for 81% of deaths.
- Among females, those 45-54 years of age had the highest number and rate of suicide deaths.
- Among males, those 25-34 years of age had the highest number of suicide deaths. Those aged 75 years and older had the highest rate of suicide deaths.

Figure 5. Number of Suicide Deaths by Age and Sex, Ohio, 2021

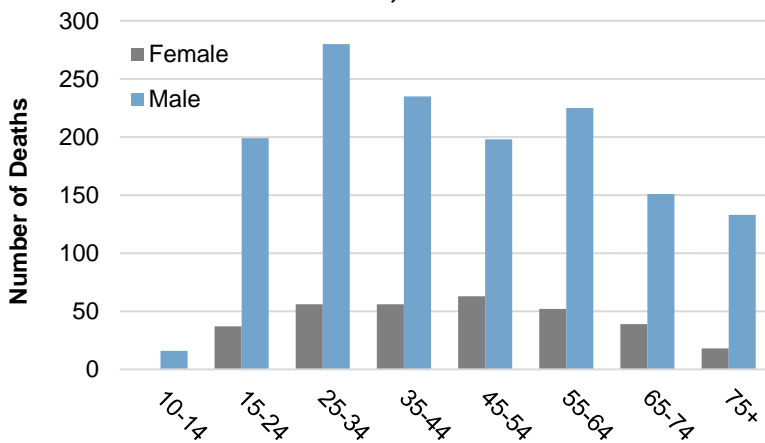
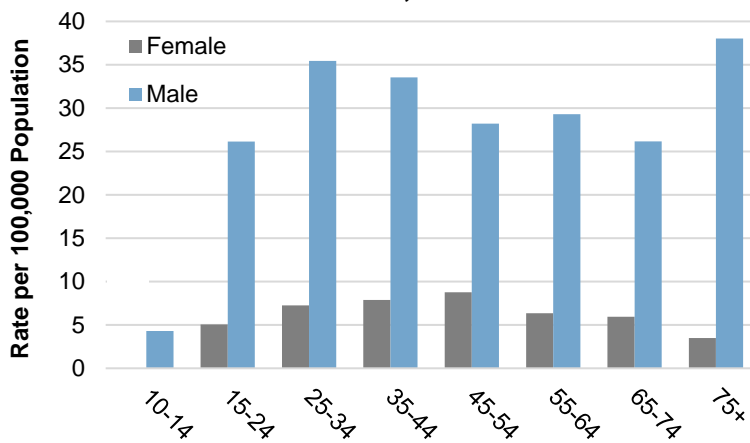


Figure 6. Rate of Suicide Deaths by Age and Sex, Ohio, 2021



Mechanism

- From 2020 to 2021, the number of suicide deaths by drug poisoning increased 22% (134 to 164), suicide by firearm increased 10% (902 to 991), and suicide by suffocation (e.g., hanging) increased 3% (434 to 449).
- In 2021, firearm was the leading mechanism of suicide among both females and males, accounting for 39% of female and 60% of male suicide deaths, respectively. Suicide by drug poisoning accounted for 27% of female suicide deaths compared with 5% of male suicide deaths.

Figure 7. Number of Suicide Deaths by Mechanism, Ohio, 2012-2021

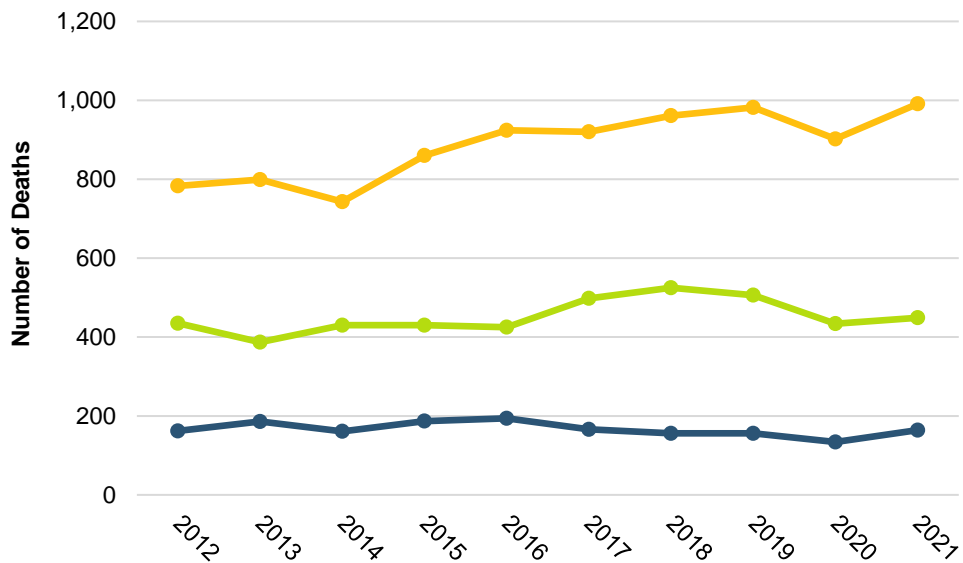
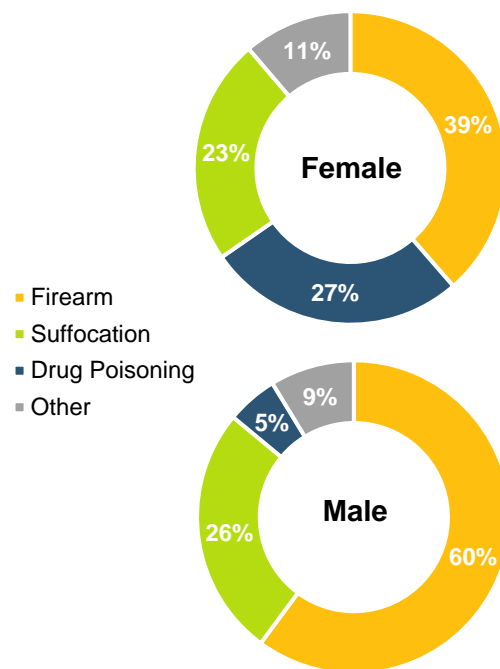


Figure 8. Percentage of Suicide Deaths by Mechanism and Sex, Ohio, 2021



Source: Ohio Department of Health (ODH) Bureau of Vital Statistics; analysis conducted by ODH Violence and Injury Epidemiology and Surveillance Section. Analysis includes Ohio residents with any of the following ICD-10 codes as the underlying cause of death: X60-X84, Y87.0, *U03. Rates are calculated per 100,000 population. Age-adjusted rates are based on the 2000 U.S. standard population.

2012-2021 Demographic Summary

Table 1. Number of Suicide Deaths by Demographic Characteristic, Ohio, 2012-2021

Demographics	2012	2013	2014	2015	2016	2017	2018	2019	2020	2021	
	Number	Number	Number	Number	Number	Number	Number	Number	Number	Number	Rate ¹
Age											
5-9	0	1	0	0	0	2	0	1	0	0	–
10-14	18	14	25	14	17	25	28	31	26	24	3.3
15-24	177	161	172	210	198	244	243	224	221	236	15.8
25-34	233	244	221	258	302	296	295	305	300	336	21.5
35-44	254	256	258	269	251	301	297	304	254	291	20.6
45-54	324	316	295	335	305	308	298	303	270	261	18.4
55-64	263	253	242	271	327	268	342	297	245	277	17.5
65-74	122	137	148	146	160	146	174	181	166	190	15.4
75+	131	129	124	145	146	154	159	163	160	151	17.5
Sex											
Female	318	336	325	339	365	328	387	352	306	329	5.5
Male	1,204	1,175	1,160	1,309	1,341	1,416	1,449	1,457	1,336	1,437	24.6
Race/Ethnicity											
American Indian/Alaskan Native Non-Hispanic	2	1	1	2	3	0	1	2	3	1	–
Asian/Pacific Islander Non-Hispanic	8	16	26	18	26	27	17	23	19	29	9.1
Black Non-Hispanic	109	107	95	103	118	138	150	148	159	161	10.2
White Non-Hispanic	1,381	1,364	1,338	1,494	1,533	1,546	1,632	1,588	1,421	1,522	15.8
Hispanic	19	18	22	22	23	27	31	40	35	50	10.2
Race/Ethnicity and Sex											
Black Non-Hispanic Female	26	11	21	20	24	17	31	23	26	26	3.2
Black Non-Hispanic Male	83	96	74	83	94	121	119	125	133	135	17.8
White Non-Hispanic Female	287	321	292	305	329	297	346	317	264	283	5.9
White Non-Hispanic Male	1,094	1,043	1,046	1,189	1,204	1,249	1,286	1,271	1,157	1,239	26.2
Hispanic Female	4	3	3	8	2	5	6	7	9	11	4.3
Hispanic Male	15	15	19	14	21	22	25	33	26	39	16.0
Total	1,534	1,524	1,488	1,648	1,706	1,744	1,836	1,809	1,642	1,766	14.8

Source: ODH Bureau of Vital Statistics; analysis conducted by ODH Violence and Injury Epidemiology and Surveillance Section.

Analysis includes Ohio residents with any of the following ICD-10 codes as the underlying cause of death: X60-X84, Y87.0, *U03. Due to missing demographic information, demographic categories may not sum to total. Race/ethnicity categories are mutually exclusive. Hispanic includes any race. Specified race (white, Black, etc.) excludes Hispanic ethnicity.

¹Rates presented for age groups are age-specific. Rates presented for sex and race/ethnicity are age-adjusted to the 2000 U.S. standard population. Rates are calculated per 100,000 population and are suppressed when counts <10.

Table 2. Number and Age-Adjusted Rate of Suicide Deaths by County, Ohio, 2017-2021

County	2017	2018	2019	2020	2021		2017-2021	
	Number	Number	Number	Number	Number	Rate ¹	Number	Rate ¹
Ohio	1,744	1,836	1,809	1,642	1,766	14.8	8,797	14.8
Adams	5	9	8	3	8	–	33	24.2
Allen	13	12	10	30	18	20.4	83	16.9
Ashland	8	8	3	9	8	–	36	12.6
Ashtabula	27	22	16	16	25	26.6	106	20.8
Athens	6	7	11	7	9	–	40	13.1
Auglaize	11	3	4	6	7	–	31	14.8
Belmont	13	17	10	12	11	17.2	63	18.4
Brown	8	10	7	7	5	–	37	17.1
Butler	52	50	53	42	50	11.7	247	12.9
Carroll	6	3	4	6	5	–	24	16.6
Champaign	7	6	10	5	4	–	32	15.9
Clark	25	29	26	34	32	23.4	146	21.7
Clermont	29	34	43	31	28	13.5	165	15.5
Clinton	6	8	8	4	6	–	32	15.9
Columbiana	17	18	21	17	22	21.0	95	18.4
Coshocton	2	7	10	12	6	–	37	17.8
Crawford	5	5	15	4	10	25.5	39	17.1
Cuyahoga	157	188	186	171	172	13.9	874	13.7
Darke	4	10	5	9	8	–	36	14.3
Defiance	9	5	5	1	8	–	28	15.5
Delaware	21	19	27	25	23	10.7	115	11.0
Erie	12	9	14	7	13	17.7	55	14.8
Fairfield	20	21	22	18	30	19.3	111	14.1
Fayette	2	2	2	1	6	–	13	9.8
Franklin	165	177	153	143	168	12.3	806	12.1
Fulton	5	15	5	5	6	–	36	16.8
Gallia	8	10	10	6	7	–	41	28.1
Geauga	13	19	12	16	9	–	69	13.7
Greene	22	27	19	21	18	11.7	107	12.6
Guernsey	6	7	6	8	7	–	34	17.0
Hamilton	112	105	110	101	117	14.4	545	13.4
Hancock	11	13	14	13	5	–	56	14.9
Hardin	5	2	9	5	5	–	26	18.5
Harrison	2	0	1	5	3	–	11	14.6
Henry	2	3	4	4	0	–	13	9.1
Highland	5	6	7	8	7	–	33	14.3

Table 2. Number and Age-Adjusted Rate of Suicide by County, Ohio, 2017-2021

County	2017	2018	2019	2020	2021		2017-2021	
	Number	Number	Number	Number	Number	Rate ¹	Number	Rate ¹
Ohio	1,744	1,836	1,809	1,642	1,766	14.8	8,797	14.8
Hocking	6	6	5	5	5	–	27	18.5
Holmes	2	2	1	4	1	–	10	5.0
Huron	9	11	14	8	13	23.1	55	19.6
Jackson	11	8	12	6	5	–	42	24.7
Jefferson	10	15	16	10	11	16.6	62	17.9
Knox	9	10	10	6	14	22.8	49	15.7
Lake	37	34	43	38	53	22.4	205	16.5
Lawrence	6	12	3	9	14	21.9	44	13.6
Licking	32	25	31	29	30	15.6	147	16.3
Logan	9	12	9	8	7	–	45	21.1
Lorain	61	52	51	44	51	15.7	259	16.4
Lucas	71	64	73	65	64	14.3	337	15.6
Madison	10	6	7	9	4	–	36	15.3
Mahoning	36	38	37	33	39	17.9	183	15.4
Marion	10	10	18	11	12	17.9	61	18.9
Medina	28	25	31	25	25	12.2	134	14.7
Meigs	6	9	4	1	6	–	26	22.6
Mercer	4	5	1	4	5	–	19	9.1
Miami	14	21	12	15	14	11.9	76	14.0
Monroe	1	2	4	4	3	–	14	19.4
Montgomery	78	79	91	82	77	13.8	407	14.7
Morgan	1	4	3	1	5	–	14	18.0
Morrow	1	6	2	7	6	–	22	13.0
Muskingum	14	25	17	10	12	16.0	78	19.1
Noble	1	3	1	0	1	–	6	–
Ottawa	8	11	11	4	5	–	39	19.7
Paulding	7	4	4	4	3	–	22	25.7
Perry	6	4	4	9	7	–	30	17.6
Pickaway	14	7	10	9	9	–	49	15.8
Pike	9	9	5	3	4	–	30	23.4
Portage	16	31	23	26	24	13.9	120	14.3
Preble	3	8	7	6	7	–	31	15.9
Putnam	5	2	3	4	2	–	16	9.5
Richland	16	21	11	18	21	17.4	87	13.8
Ross	15	18	10	14	6	–	63	16.1
Sandusky	11	9	8	6	10	16.0	44	15.3

Table 2. Number and Age-Adjusted Rate of Suicide by County, Ohio, 2017-2021

County	2017	2018	2019	2020	2021		2017-2021	
	Number	Number	Number	Number	Number	Rate ¹	Number	Rate ¹
Ohio	1,744	1,836	1,809	1,642	1,766	14.8	8,797	14.8
Scioto	10	21	13	7	10	14.2	61	17.2
Seneca	10	12	14	8	5	–	49	17.6
Shelby	6	11	7	8	8	–	40	16.2
Stark	70	71	73	53	75	19.9	342	18.4
Summit	96	80	90	80	88	16.3	434	15.8
Trumbull	46	35	36	38	21	8.6	176	16.8
Tuscarawas	15	13	11	16	13	13.5	68	13.7
Union	3	9	7	8	5	–	32	11.3
Van Wert	5	2	3	0	3	–	13	9.6
Vinton	3	3	4	3	1	–	14	21.5
Warren	29	26	31	26	42	16.8	154	12.8
Washington	13	6	11	12	5	–	47	15.9
Wayne	16	17	24	14	17	14.4	88	15.5
Williams	7	6	8	7	6	–	34	18.2
Wood	14	23	11	9	20	16.0	77	12.1
Wyandot	3	6	4	3	4	–	20	18.5

Source: ODH Bureau of Vital Statistics; analysis conducted by ODH Violence and Injury Epidemiology and Surveillance Section. Analysis includes Ohio residents with any of the following ICD-10 codes as the underlying cause of death: X60-X84, Y87.0, *U03. County data are based on county of residence.

¹Rates are age-adjusted to the 2000 U.S. standard population. Rates are calculated per 100,000 population and are suppressed when counts <10.